

SUN BEAR ENCLOSURE AT THE ORANGUTAN FOUNDATION INTERNATIONAL QUARANTINE AND CARE CENTER IN PASIR PANJANG, KALTENG, INDONESIA

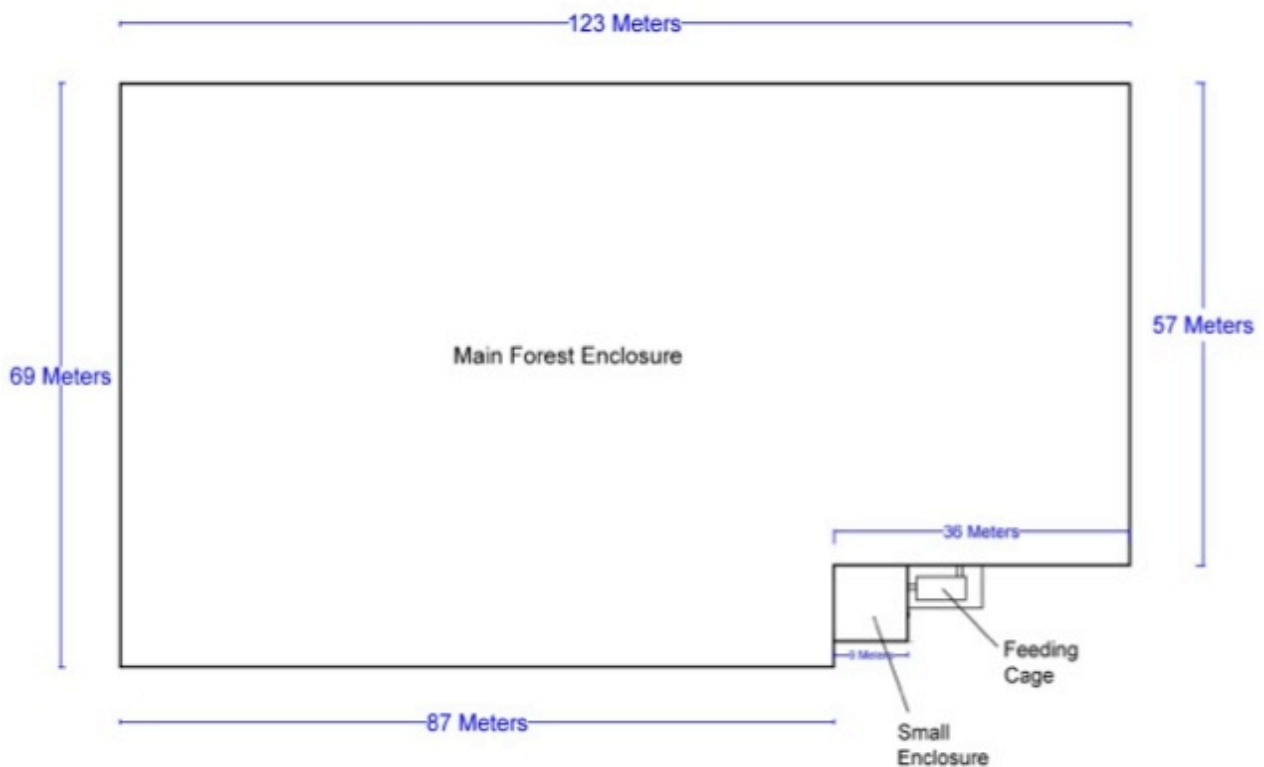
Project designed by "Help the Bears"

Construction supervised by Patrick Rouxel

This is a permanent and low maintenance enclosure for sun bears. It consists of a feeding cage, a small 9 m x 9 m outdoor enclosure and a main forest enclosure of about 0,8 hectare in size. It was made on OFI land for 3 adult sun bears in the care of OFI.

The small and big enclosures are made of a 1,8 m high brick wall with a 70 cm deep foundation. The wall is doubled on the inside with an electric fence of 7 lines, powered by solar panels. Total cost (including supplies, labour and electrical system): \$ 38 000,00 USD. The 3 bears were moved to the small enclosure and feeding cage on 31 March 2014. They have been given access to the main forest enclosure since 21 August 2014.

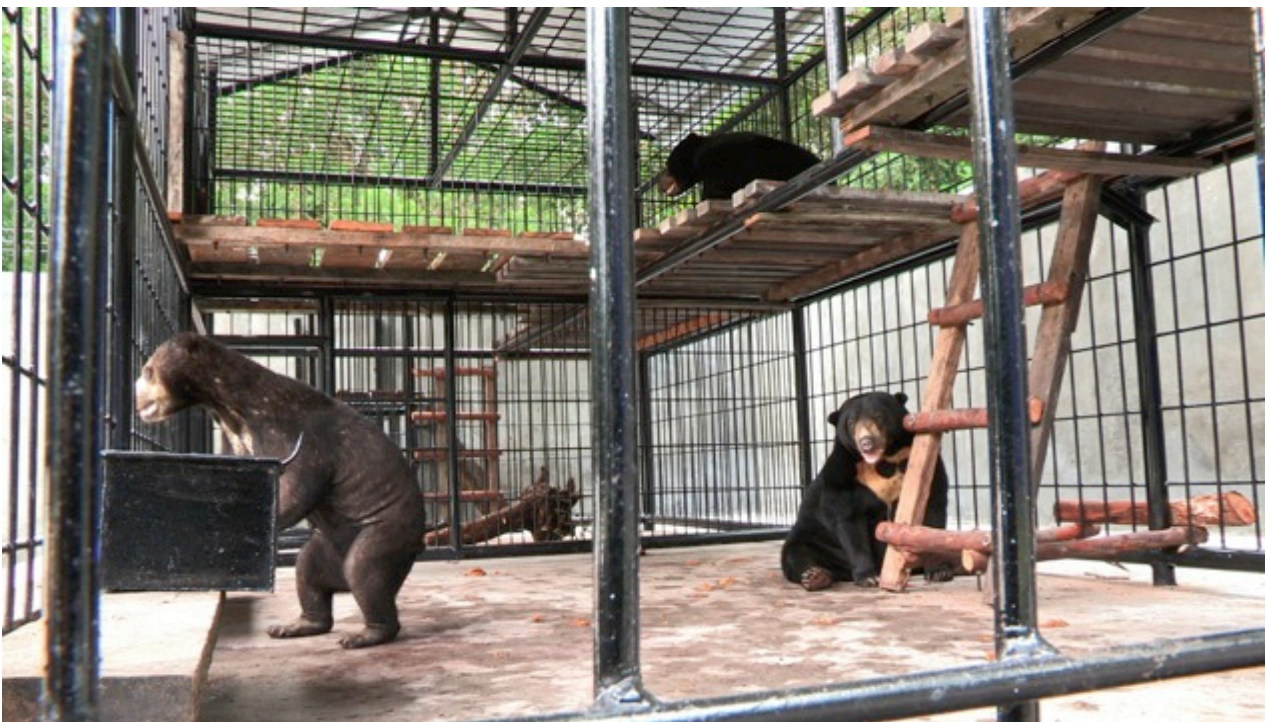
Map:



FEEDING CAGE



Feeding cage with 2 compartments for a total size of 2,5 m x 6 m and a height of 2 m.



Feeding cage's main compartment



Small compartment of feeding cage



Feeding cage side view



Bear corridor to small enclosure



Bear corridor to main enclosure



Feeding cage and forest of the main enclosure in the background

SMALL ENCLOSURE



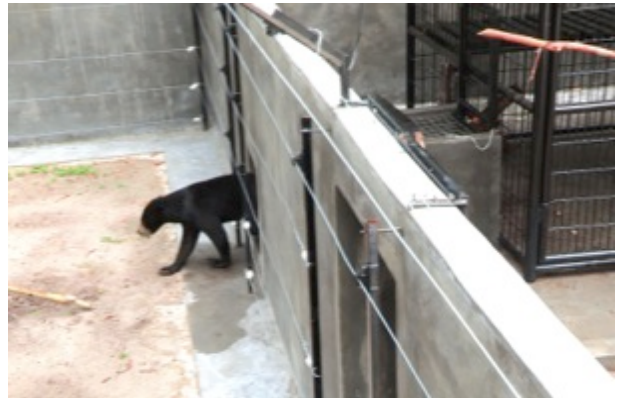
Small enclosure (9 x 9 meters) for the bears to learn about the electric fencing



Enrichment within the small enclosure (with recycled wood)



Door from cage to small enclosure



Entering small enclosure from cage



Bear door to cage and human door to outside



Viewing platform onto small enclosure



Bear door from small to main enclosure



Entering main enclosure from small enclosure

MAIN FOREST ENCLOSURE



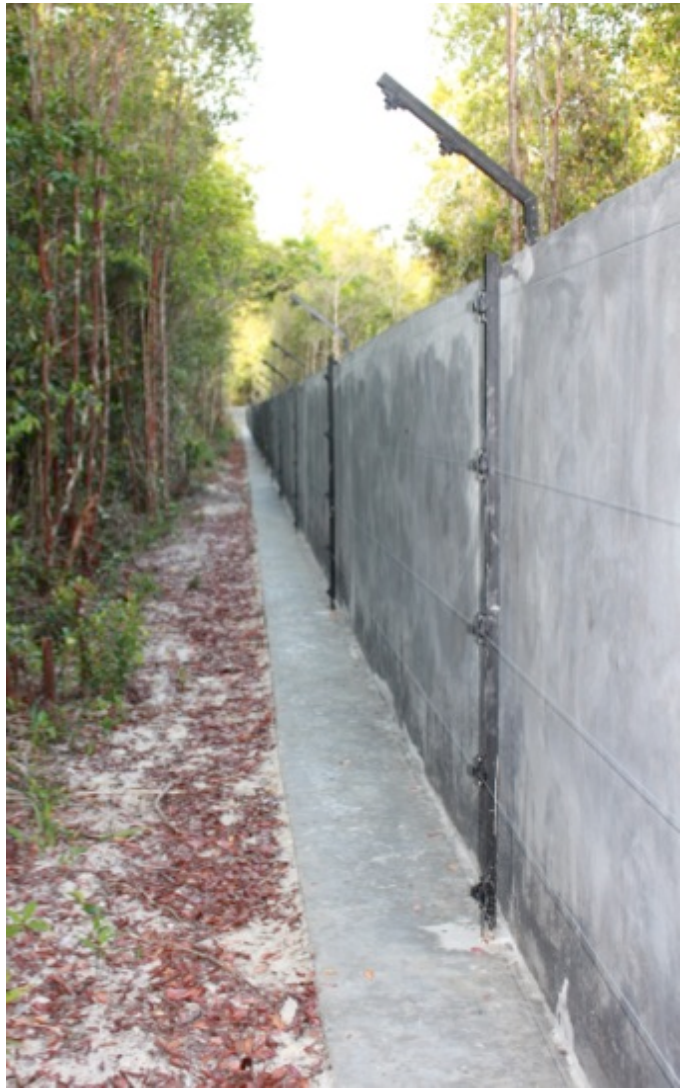
From left to right: shed, feeding cage and wall of the main enclosure with one of its access doors



Right wall of the main enclosure (57 meters)



Wall foundation (70 cm)



Back wall of the main enclosure (123 meters)



Left wall of the main enclosure (69 meters)



Front wall of the main enclosure (87 meters) and door



Pool and deck in the main enclosure



Viewing platform and door to pool area



Viewing steps into main enclosure



Pool and deck



To empty pool



Corner steps to check the fencing inside



Entering the main enclosure from feeding cage



One of the 3 doors in the big enclosure



Tree protection within the main enclosure



Tree protection



Tree protection

ELECTRIC FENCING SYSTEM



Solar panels to charge batteries



Batteries and charge controllers



Energizers for small enclosure, main enclosure and tree protection



Shed for electric system and appliances



Lightning protection kits



Overhang lines of main enclosure



End strainer

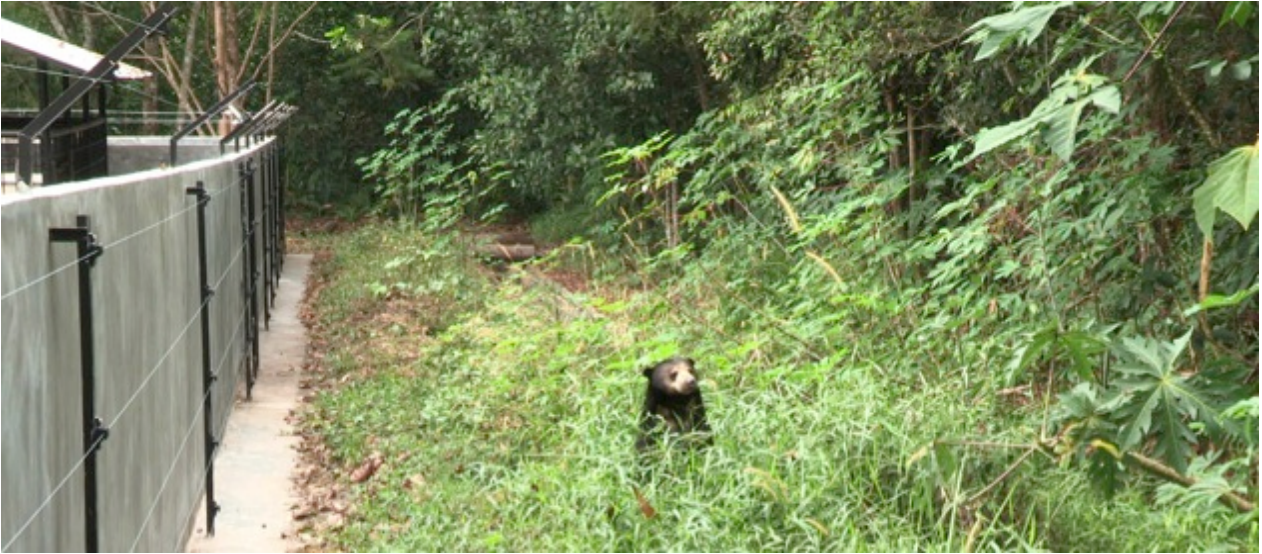


Insulator



Earth rod (x 10)

HILDA AND DESI IN THE MAIN ENCLOSURE





This enclosure is dedicated to Kevin (right picture) who shared the small enclosure and feeding cage with Hilda and Desi but died on May 15th 2014, 3 months before completion of the main enclosure.

<http://help3sunbears.blogspot.com>

<http://orangutan.org>

